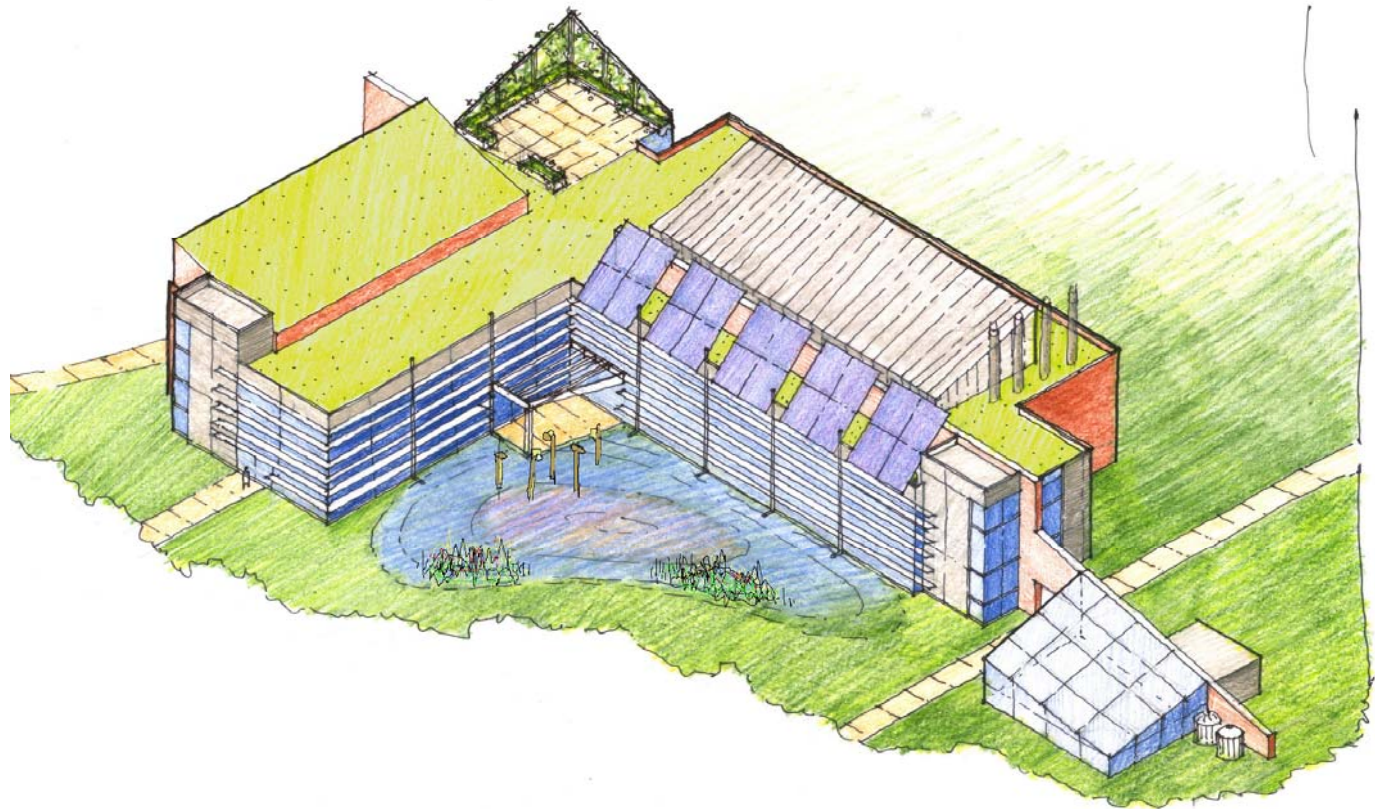


# Platinum Green Science Building

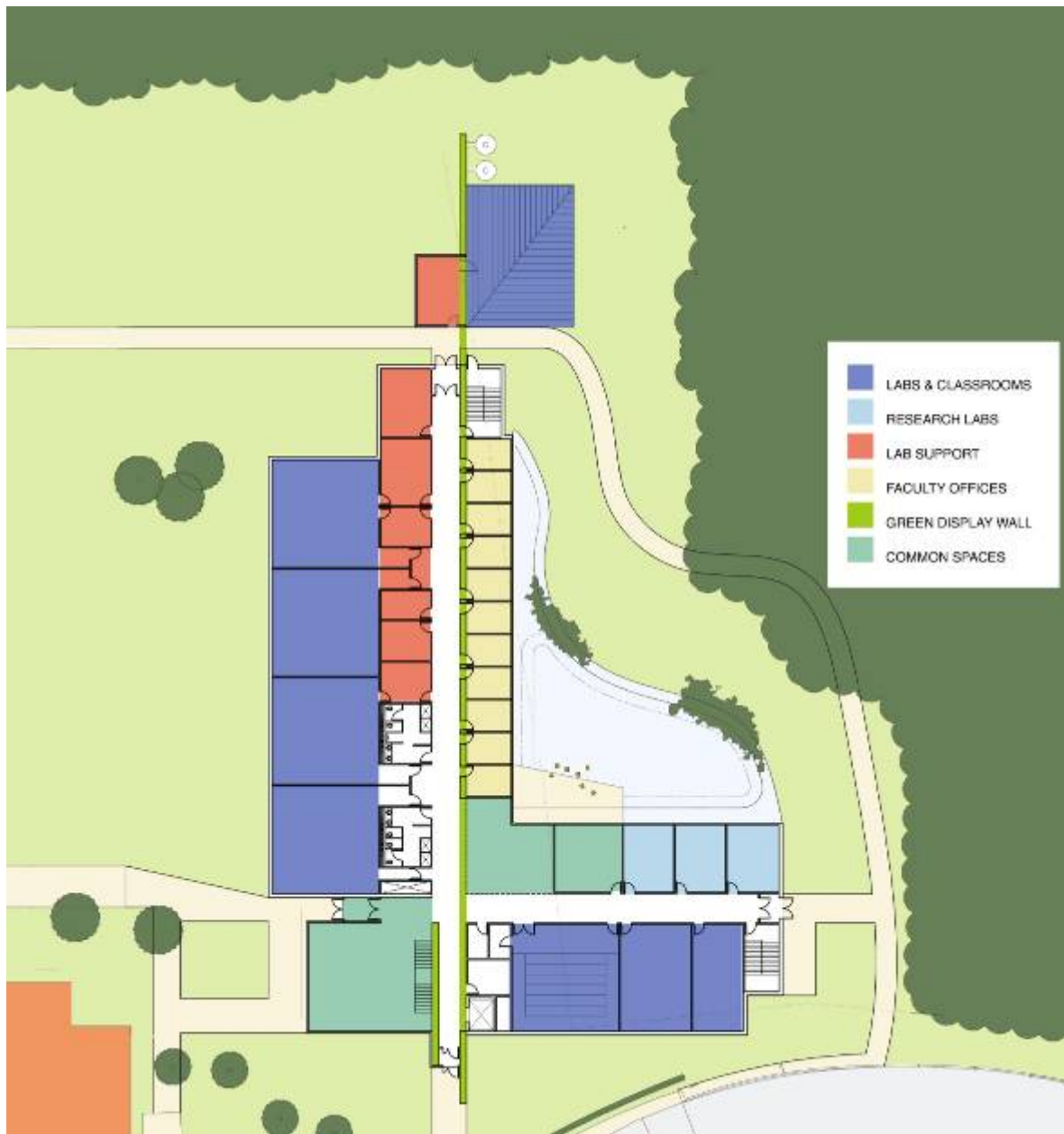


# Goals of the *Key to the Future Campaign*

- Virginia Wesleyan College is striving to become a Phi Beta Kappa caliber college by the end of the decade.

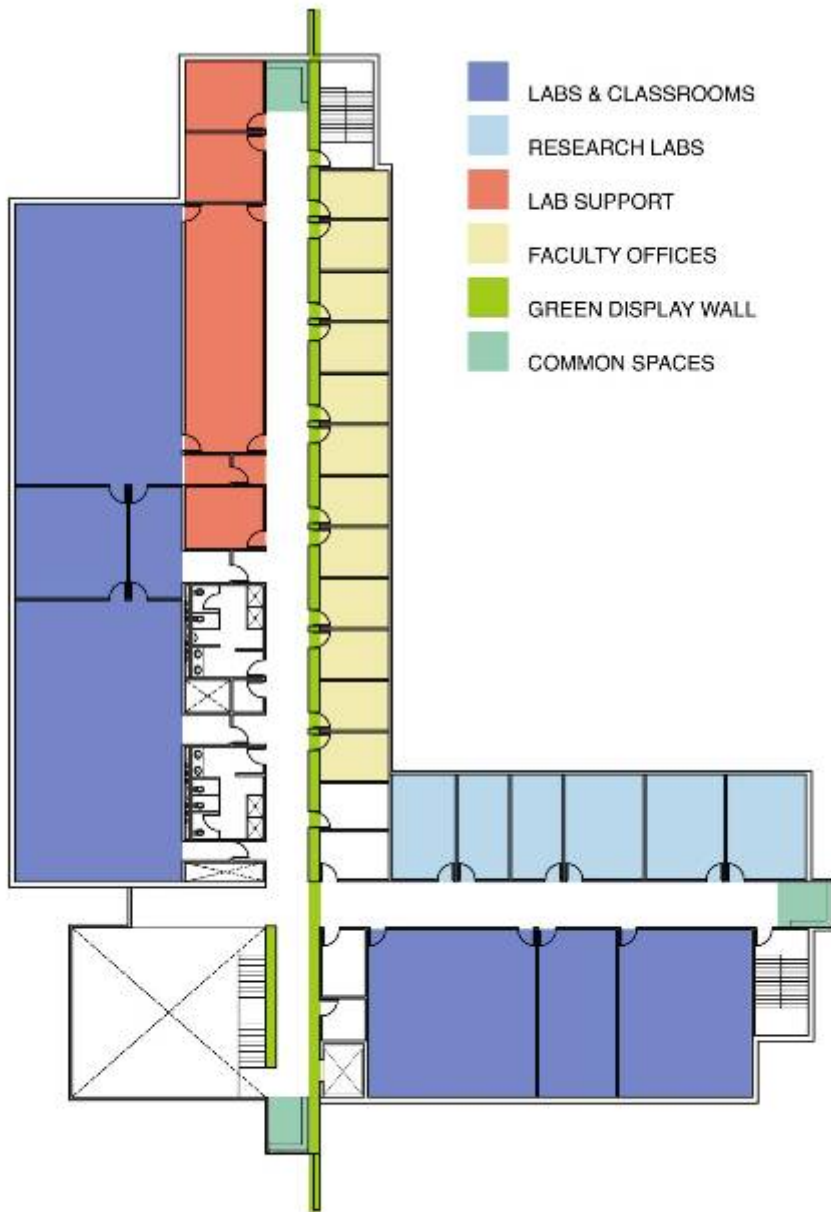
# Goals of the *Key to the Future Campaign*

- This building will be the model for how science facilities will be built and how science will be taught in the future.



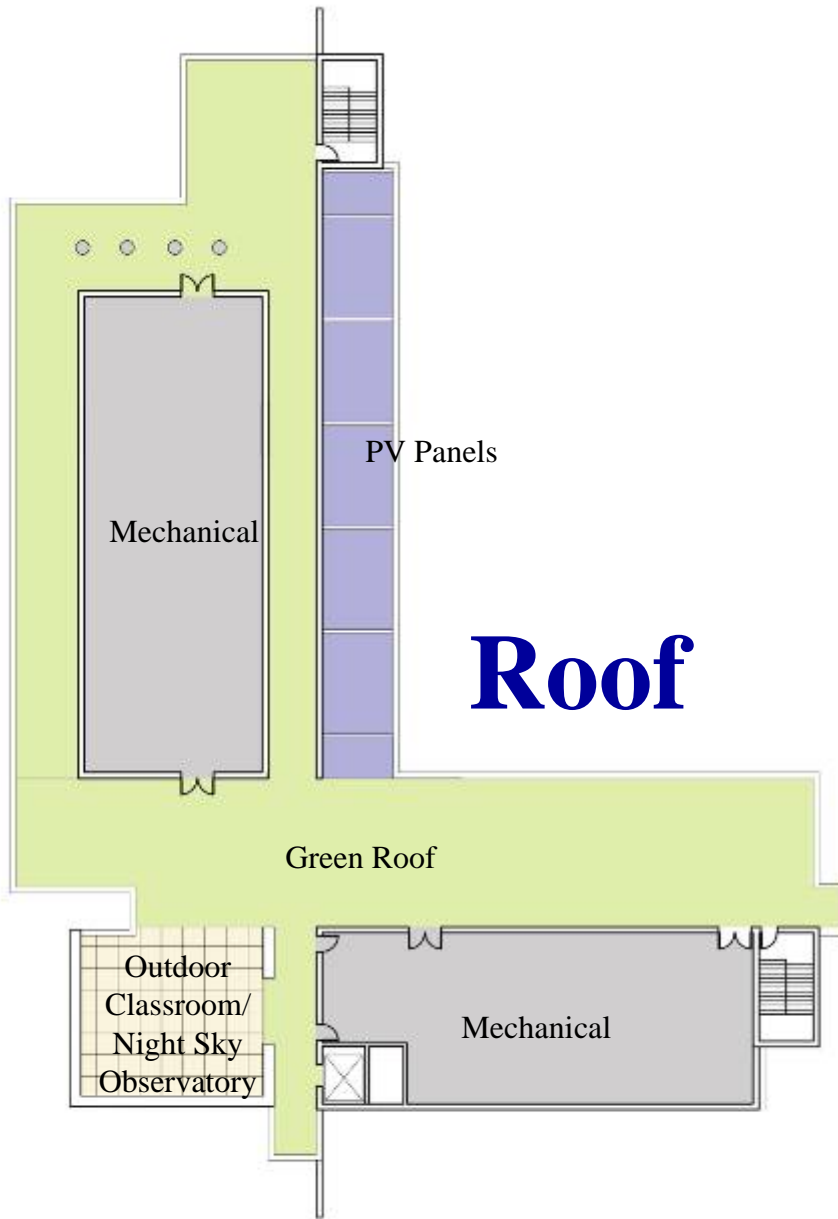
## First Floor

- Modern laboratories for biology, chemistry, earth and environmental sciences, computer science and physics.
- Dedicated research areas for faculty
- Natural history areas for geological, zoological and botanical specimens.
- Museum and green exhibit wall.



## Second Floor

- Two computer science classrooms with computers for each student.
- Multipurpose, reconfigurable classrooms to accommodate changing instructional needs.
- Instructional areas that allow classes to move easily between the classroom and the laboratory.



- An observatory dome and pier to house a high-power telescope, tracking instrumentation, and image capture and processing equipment.
- A new greenhouse, herbarium, and botany laboratory.



**Native  
Plants**



**Pervious Pavers**



**Energy  
Monitoring**



**Recycled  
Materials**

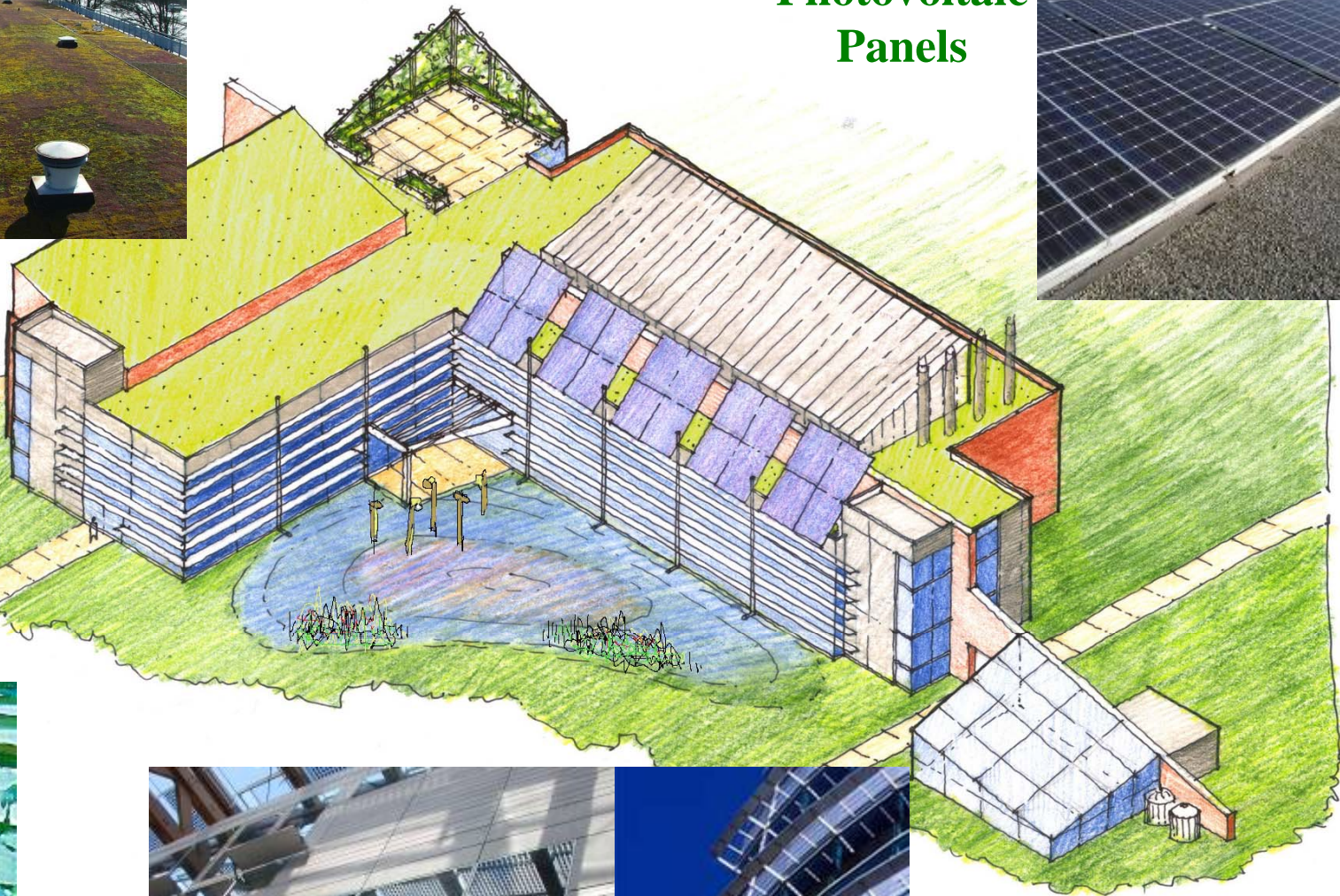
**Photovoltaic  
Panels**



**Green  
Roof**



**Rain  
Garden**

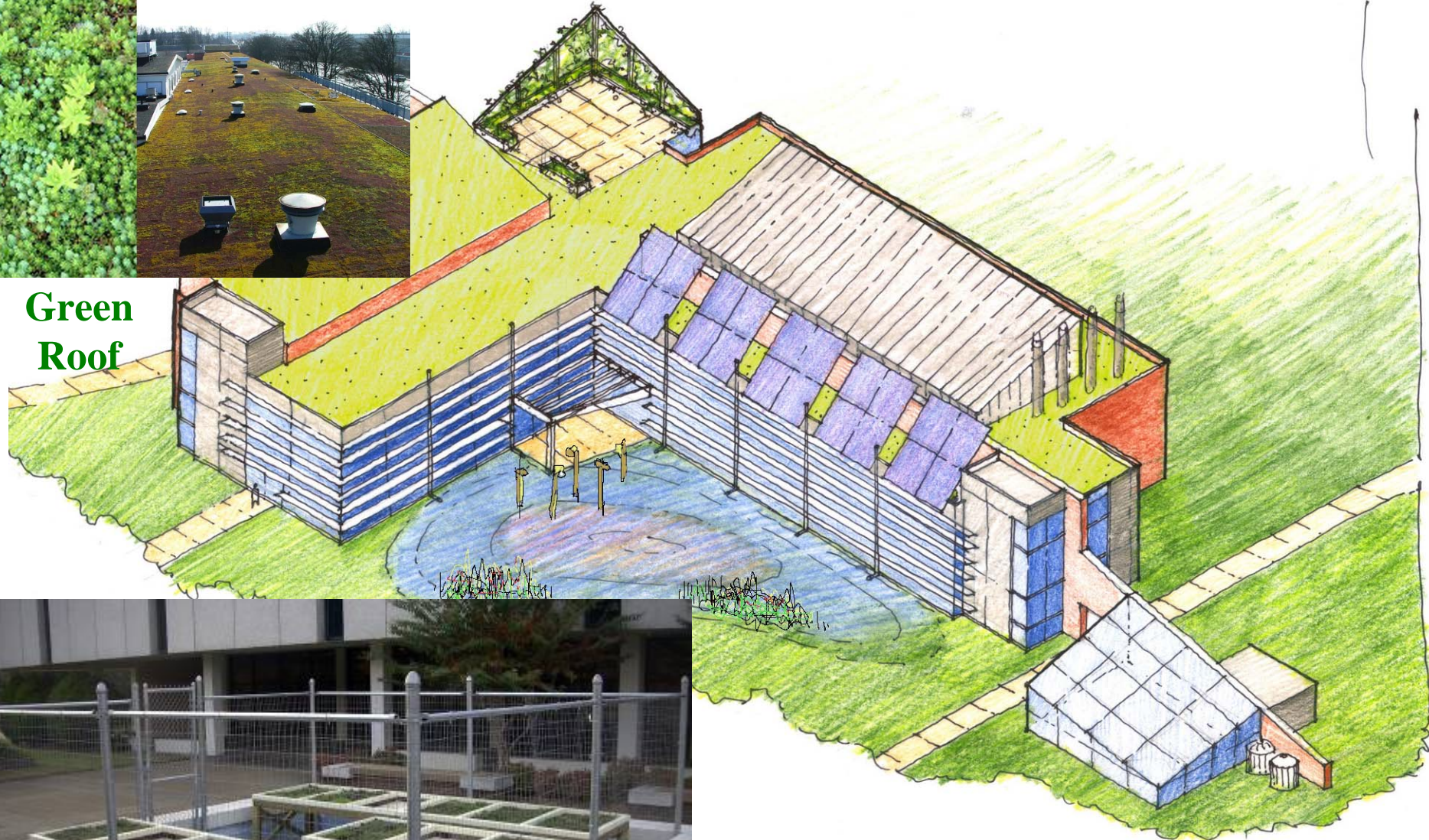


**Light Shades &  
Sun Shelves**





**Green  
Roof**



## **Class Projects in Several Classes**

**(EES 220, 450; MATH 226; BIO 207, 316)**

<b>Platinum Science Building</b>				<b>Geothermal Heat Pumps</b>	
Square Feet	45,000			Townhouse Sq. Ft.	1,896
Utilities per Sq. Ft.	\$ 1.76			Utilities per Sq. Ft.	\$ 1.76
Premium for laboratory	0.22				
Utilities cost per year	\$ 96,624.00			Utilities cost per year	\$ 3,336.96
Extra for Platinum	\$850,000.00			Extra for Geothermal	\$ 1,800.00
Annualized Financing	\$ 59,628.18			Annualized Financing	\$ 229.10
50% Savings	\$ 48,312.00			8% Savings	\$ 266.96
Roof 40 Years	\$137,000.00				
0.375	\$ 51,375.00				
Annualized Interest @ 7.5%	\$ 3,429.02				
Total savings	\$ 51,741.02				
Value Judgements					
	Photovoltaics				